

THIS INSTRUMENT PREPARED BY:

# Bowman CONSULTING

Bowman Consulting Group, Ltd. Phone: (772) 283-1413  
301 S.E. Ocean Blvd. Suite 301 Fax: (772) 220-7887  
Stuart, Florida 34904 www.bowmanconsulting.com  
CERTIFICATE OF AUTHORIZATION NO. LB 8030

# GARDENS SELF STORAGE

BEING A PORTION OF THE SOUTHWEST 1/4 OF  
SECTION 18, TOWNSHIP 42 SOUTH, RANGE 43 EAST  
CITY OF PALM BEACH GARDENS, PALM BEACH COUNTY, FLORIDA

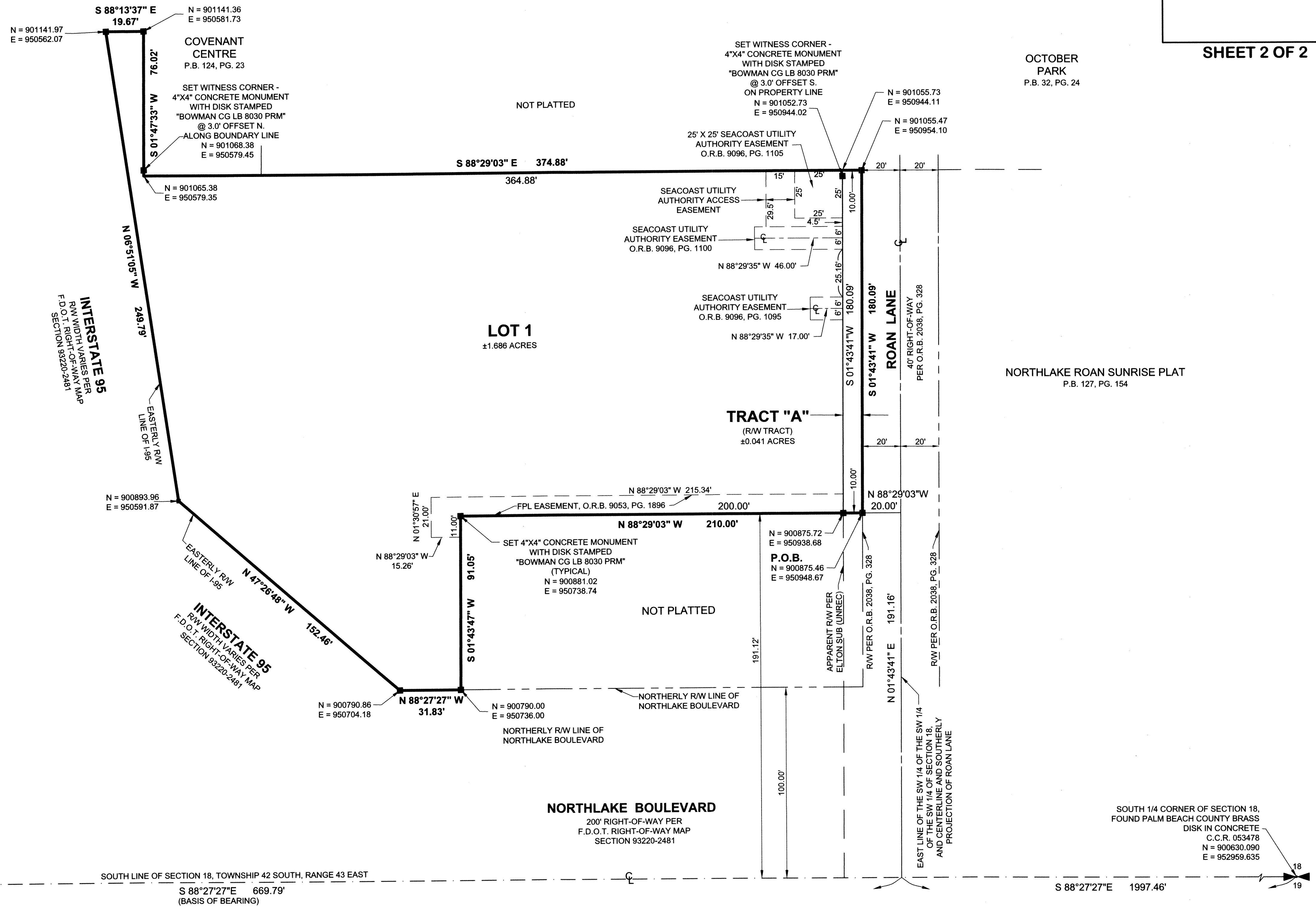
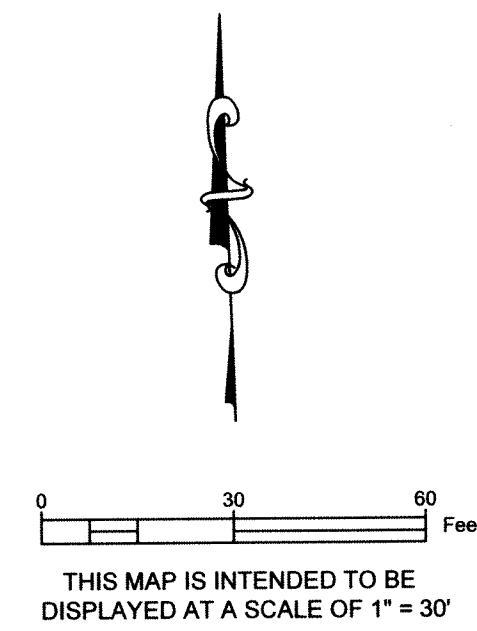
2

### ABBREVIATIONS:

C.C.R. CERTIFIED CORNER RECORD  
F.D.O.T. FLORIDA DEPARTMENT OF TRANSPORTATION  
O.R.B. OFFICIAL RECORDS BOOK  
P.B. PLAT BOOK  
PG. PAGE  
P.O.B. POINT OF BEGINNING  
P.R.M. PERMANENT REFERENCE MONUMENT  
R/W RIGHT-OF-WAY  
UNREC UNRECORDED

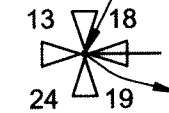
### LEGEND:

- PLAT BOUNDARY LINE
- - - EASEMENT LINE
- - - RIGHT OF WAY LINE
- - - SECTION LINE
- SET 4" x 4" CONCRETE MONUMENT STAMPED "BOWMAN CG LB 8030 PRM"
- ⊕ FOUND 1/4 SECTION CORNER
- ⊕ SECTION CORNER
- ⊕ CENTERLINE



### POINT OF COMMENCEMENT

S.W. CORNER OF SECTION 18,  
PALM BEACH COUNTY PK NAIL  
AND WASHER  
C.C.R. 053314  
N = 900701.888  
E = 950293.353  
(SEARCHED FOR BUT DID NOT LOCATE.  
HELD CCR COORDINATES)



SOUTH 1/4 CORNER OF SECTION 18,  
FOUND PALM BEACH COUNTY BRASS  
DISK IN CONCRETE  
C.C.R. 053478  
N = 900630.090  
E = 952959.635

OCTOBER  
PARK  
P.B. 32, PG. 24

SHEET 2 OF 2

NORTHLAKE ROAN SUNRISE PLAT  
P.B. 127, PG. 154

NORTHLAKE BOULEVARD  
200' RIGHT-OF-WAY PER  
F.D.O.T. RIGHT-OF-WAY MAP  
SECTION 93220-2481

SOUTH LINE OF SECTION 18, TOWNSHIP 42 SOUTH, RANGE 43 EAST  
S 88°27'27\"/>